



Investment Opportunities

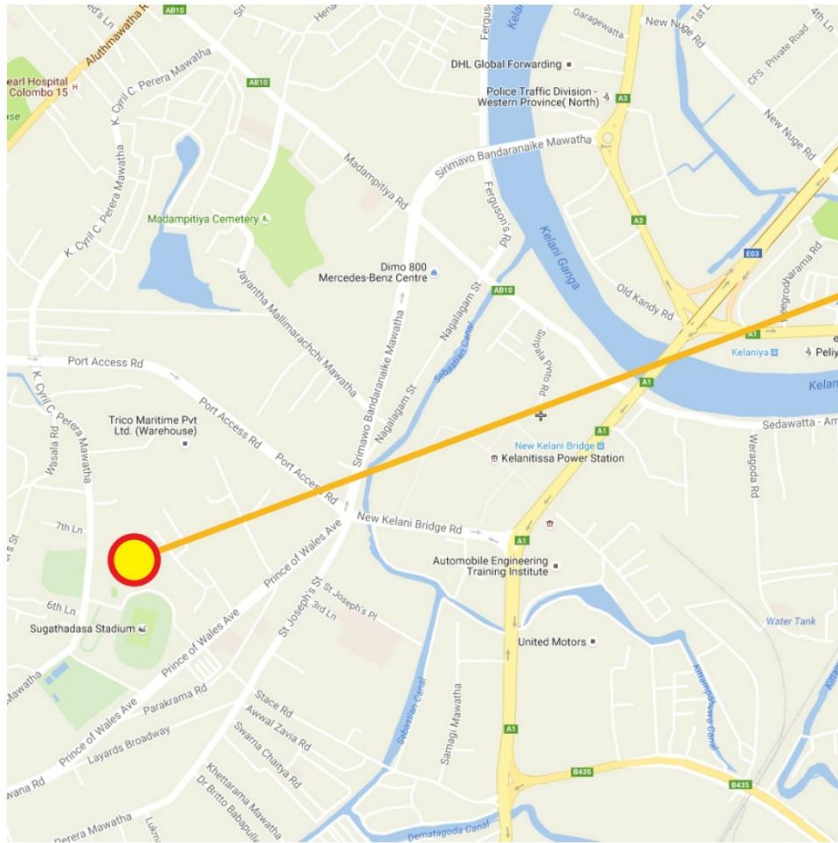
Urban Development Authority
Sri Lanka

Lands



Ministry of Megapolis & Western Region Development

312 Watta- Blomendhal

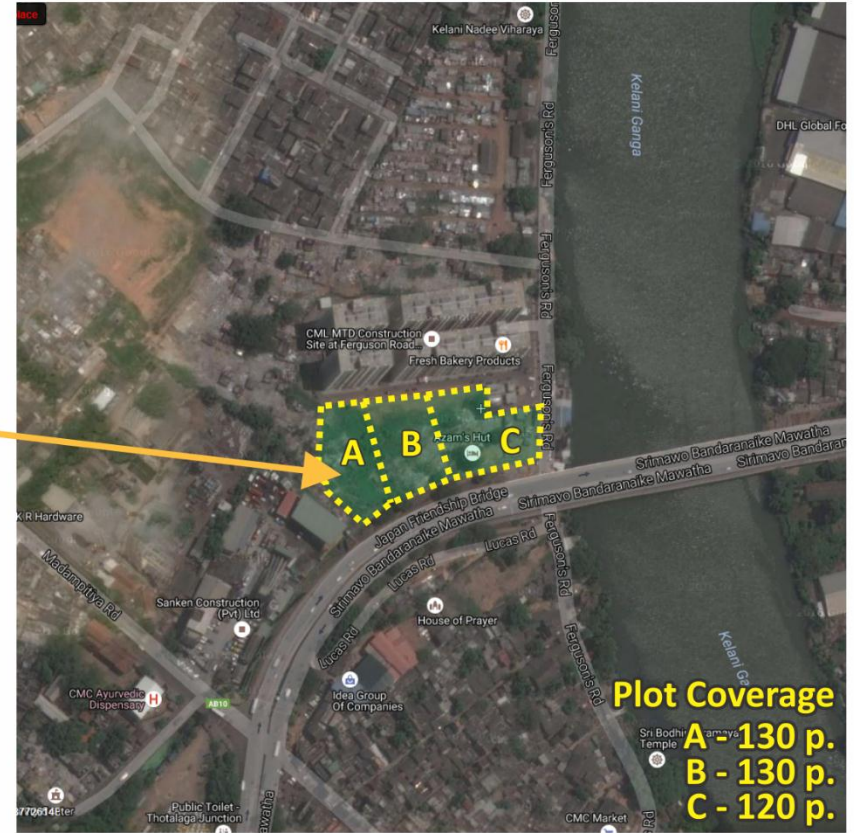
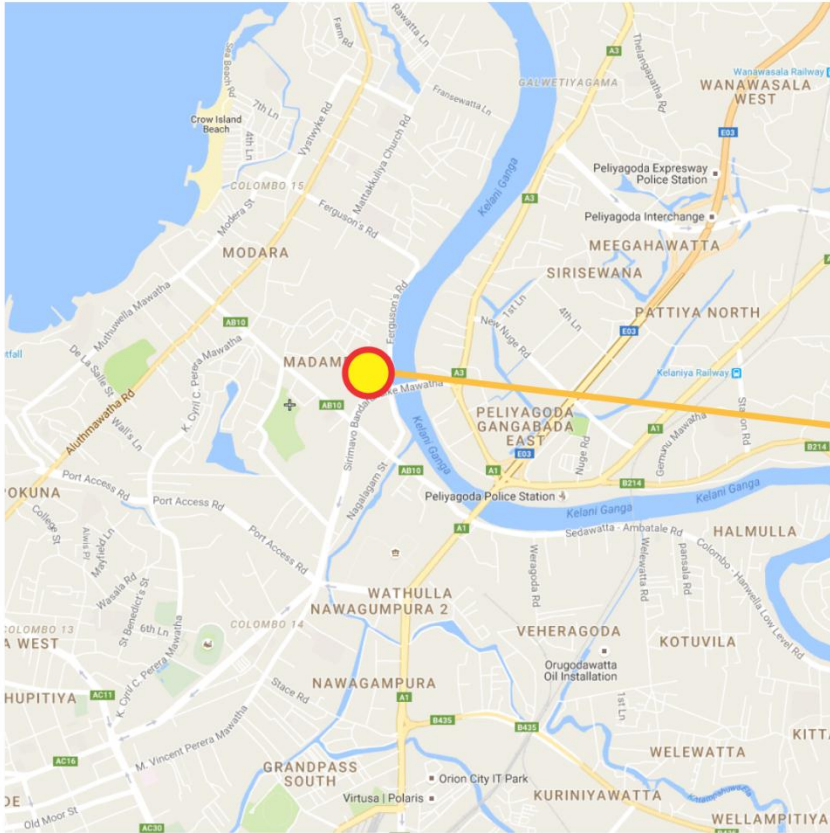


Location & Surrounding

- ❖ Situated in Northern part of the CMC area.
- ❖ Commercial institutions have direct connectivity from the site.
- ❖ Direct access to Cyril C. Perera Mawatha
- ❖ Ideal location is very famous for commercial activities which is setting up in a Port related activity zone in zoning plan 2020.

Land Extend:- 01A

Land at Furgusion Road



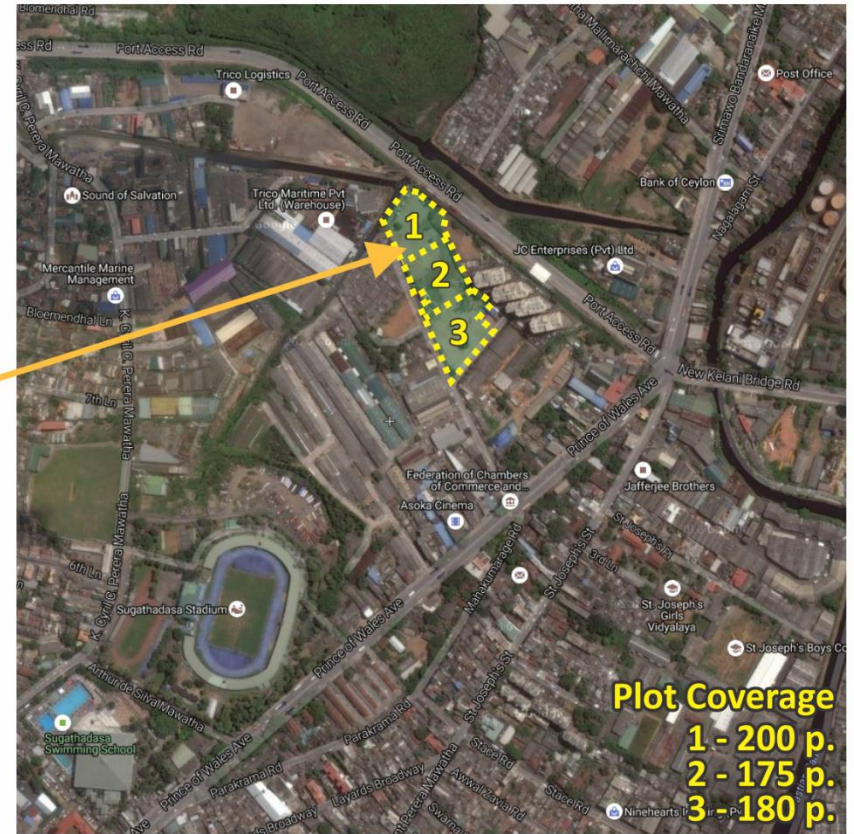
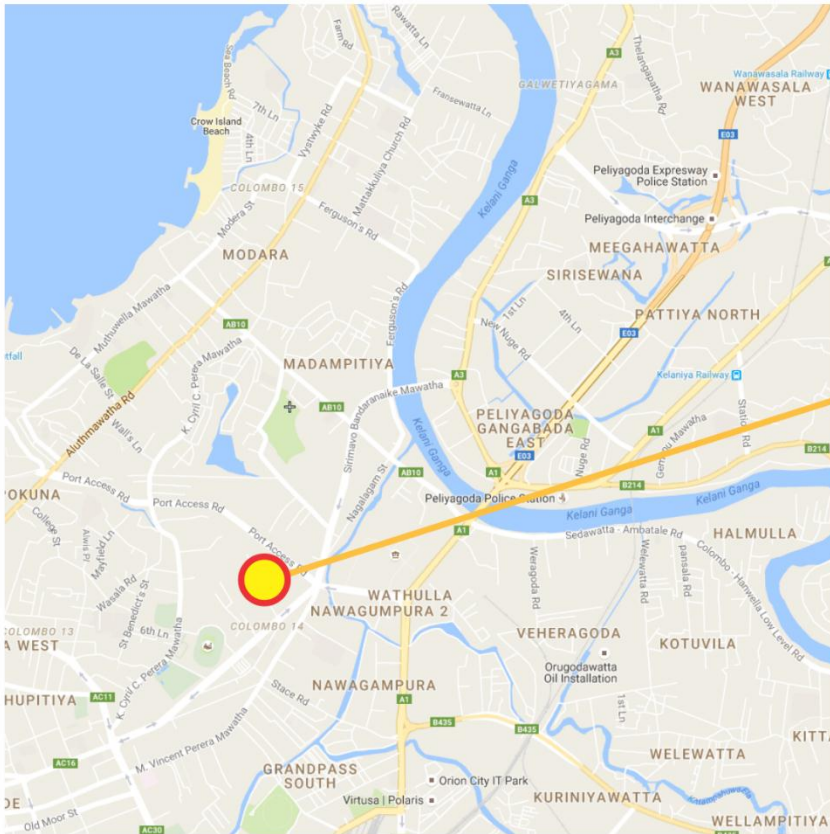
Plot Coverage
A - 130 p.
B - 130 p.
C - 120 p.

Location & Surrounding

- ❖ Situated in Northern part of the CMC area which is most developing in the city of Colombo.
- ❖ Financial institutions, educational institutions, commercial institutions, are located in the surrounding area.
- ❖ The boundary of land is demarcated by two main roads facing to Sirimawo Bandaranayake Mw and Fergusion road.
- ❖ Ideal location is very famous for yards because close proximity to harbor commercial which is setting up in a Port related activity zone in zoning plan 2020.

Land Extend:- 03A

StadiumGama



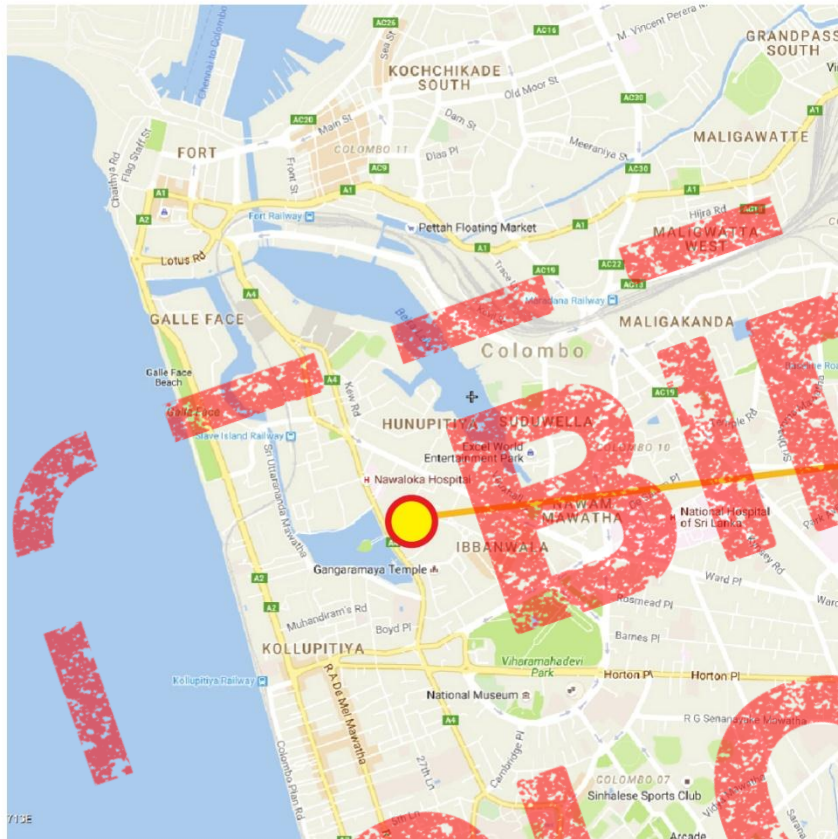
Plot Coverage
1 - 200 p.
2 - 175 p.
3 - 180 p.

Location & Surrounding

- ❖ Situated in Northern part of the Colombo faced to the Port access road near the Ingurukade Junction.
- ❖ Financial institutions, educational institutions, commercial institutions are located in the surrounding area.
- ❖ The land is faced to port access road.
- ❖ Ideal location is very famous for yards because close proximity to harbor commercial which is setting up in a Port related activity zone in zoning plan 2020.

Land Extend:- 02A 02R

Colombo Commercial Land - Colombo 02

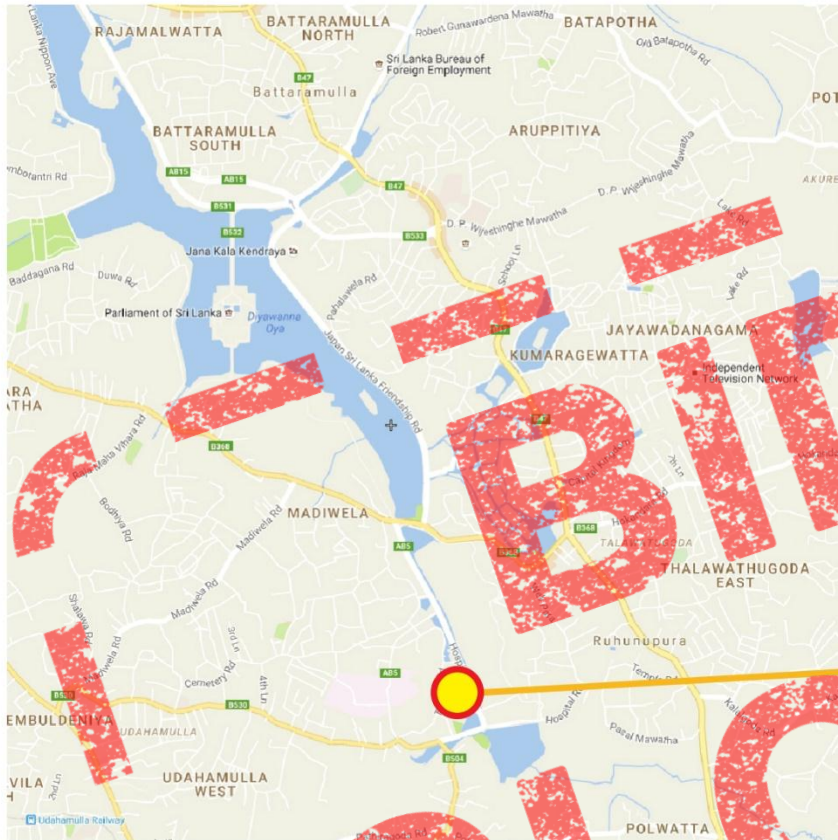


Location & Surrounding

- ❖ Located next to Nawaloka hospital which is one of the major private hospital which serves to the residents by various health care facilities.
- ❖ Proposed land is located next to the Altair 60 storied mixed development comprised of commercial & service apartments erected in UDA owned part of Colombo commercial land.
- ❖ Refreshing activities near Beira Lake that people enjoy or excel at which provides physical as well as mental stimulation will enhance the land values.
- ❖ The area is proposed to be served with high speed public transit modes in the near future.

Land Extend:- 06A

Thalapathpitiya Land

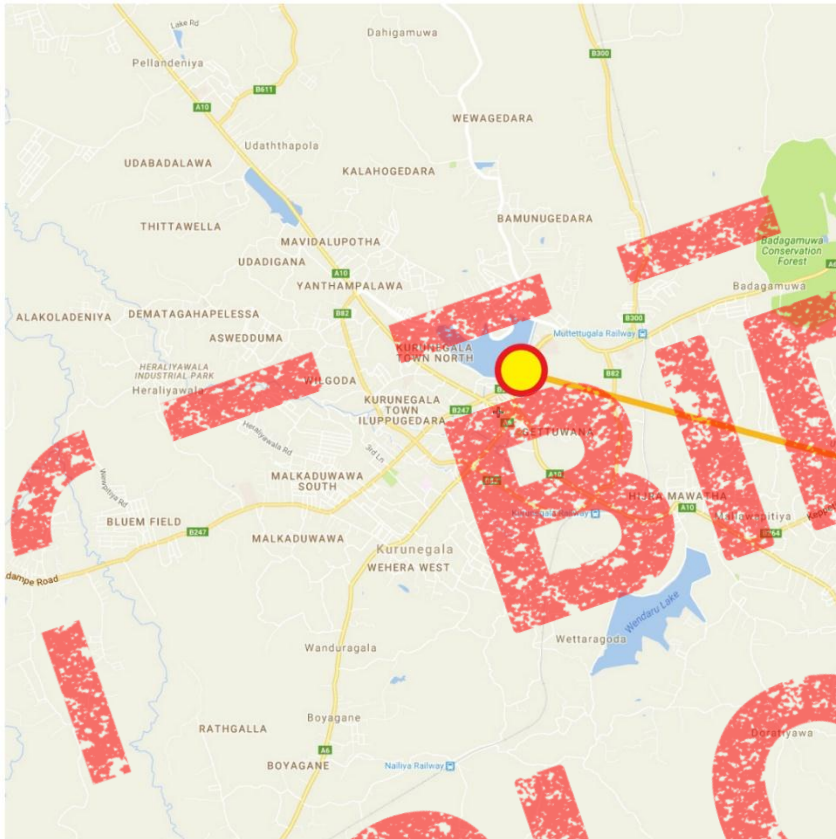


Location & Surrounding

- ❖ Land to parliament only 2.5 Km & Green view surrounding the land
- ❖ 500m to Sri Jayawadenapura Hospital , Near by Jogging track. Children park and open Gym
- ❖ Many restaurants are in Close proximity

Land Extend:- 06A 02R 13p

Satyawadi Land - Kurunegala



Location & Surrounding

- ❖ Located adjacent to the Dambulla Road and Kurunegala Lake in the heart of the Kurunegala Town.
- ❖ It is close to the Welagedara Stadium
- ❖ Land is bounded by a School from one side and commercial building from the other side.
- ❖ The site is a bare land and used as a Bus Park presently

Land Extend:- 01A 02R 26p

Land Next to Nawalaoka Car park

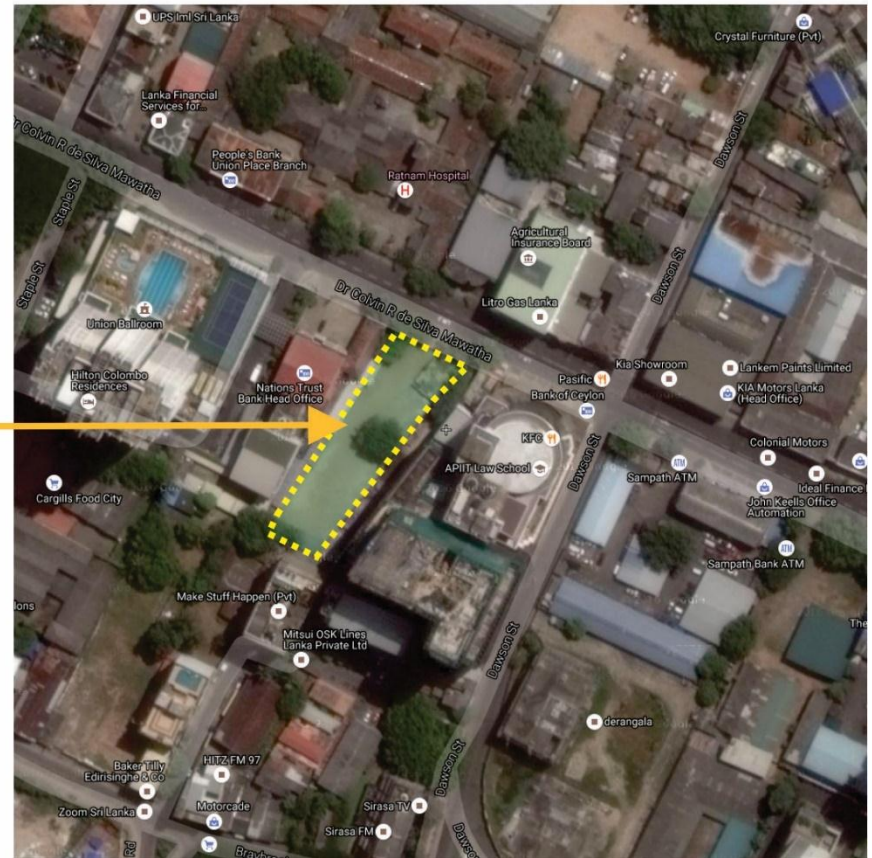
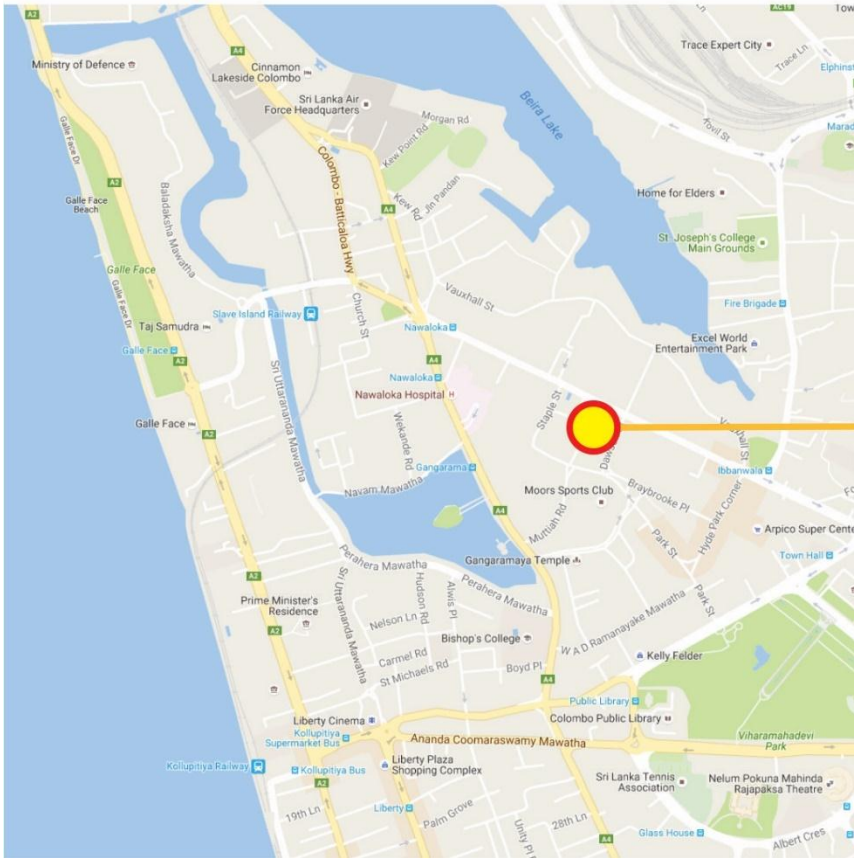


Location & Surrounding

- ❖ Nawaloka hospital in one of the major private hospital which serves to the residents by various health care facilities.
- ❖ Proposed land is located in between the Nawaloka Hospital premises and the ongoing 60 storied mixed development comprised of commercial & service apartments erected in UDA owned Colombo commercial land.
- ❖ Refreshing activities near Beira Lake that people enjoy or excel at which provides physical as well as mental stimulation will enhance the land values.
- ❖ Nawam Mawatha which is a popular destination to high end office related activities, connects with Sir James Peiris Mawatha, in front of the proposed site.
- ❖ The area is proposed to be served with high speed public transit modes in the near future.

Land Extend:-
03R 10p

Union Place Land

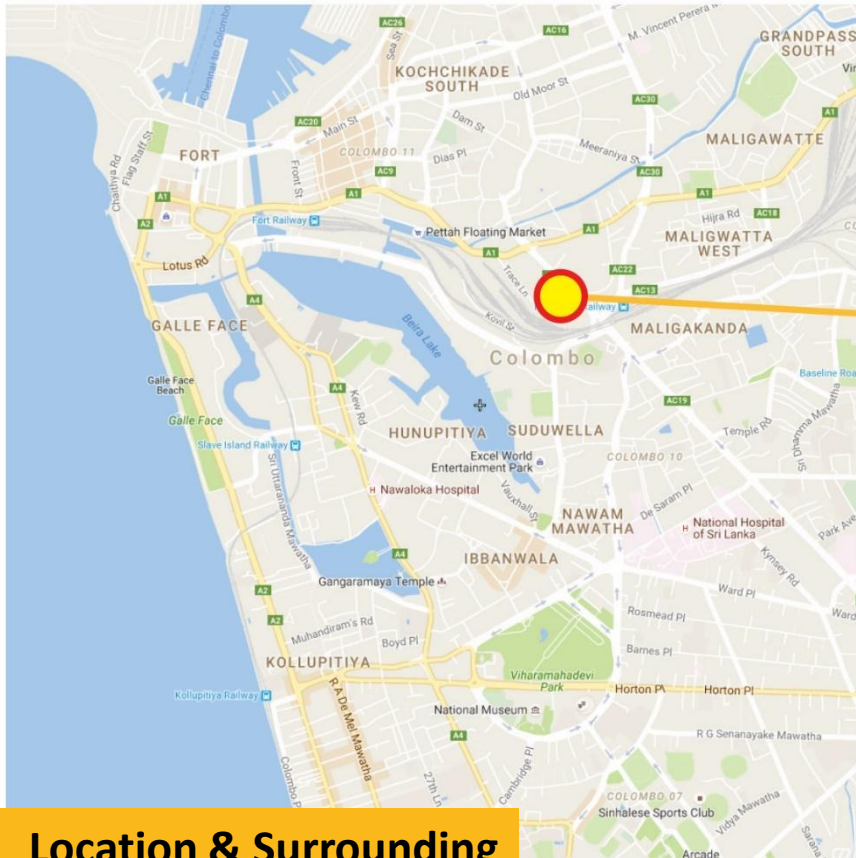


Location & Surrounding

- ❖ Land Located in The Unique place of the Heart of the City
- ❖ Next to Access Tower presently Using as the car park
- ❖ 25 meters from on 320 Apartment complex
- ❖ From JIAC Hilton about 15m
- ❖ Very close to Nawalaoka Hospital

Land Extend:- 02R 30p

Tripoli Square Development Project



Location & Surrounding

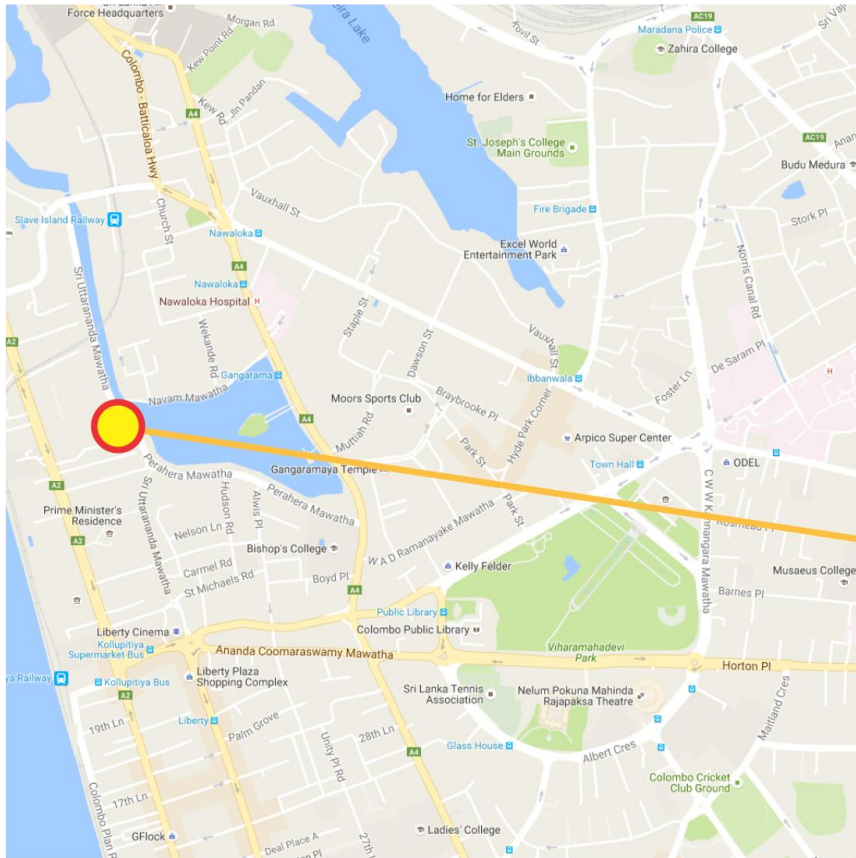
- ❖ Located in a prime location with multi modal transport access.
- ❖ The adjacent land and buildings there of was recently refurbished by the UDA and has been allocated for IT/BPO related development.
- ❖ East Beira Lake development with tourism and recreation related activities will attract many positive externalities to the development to the proposed site.
- ❖ Lotus Tower, Trace Expert City, Maradana Railway Station, Elpiniston & Tower Theaters, are some of the key developments in an around the area.

Land Extend:- 01A

Refurbished Area by UDA
3D Perspective



Perahera Mawatah land

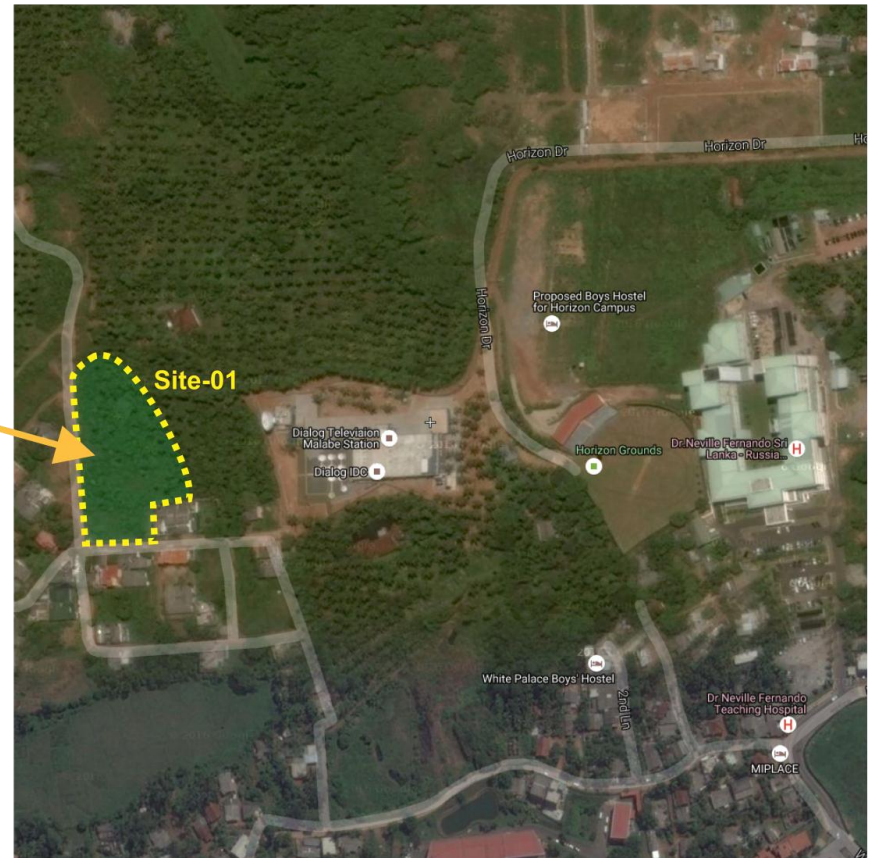
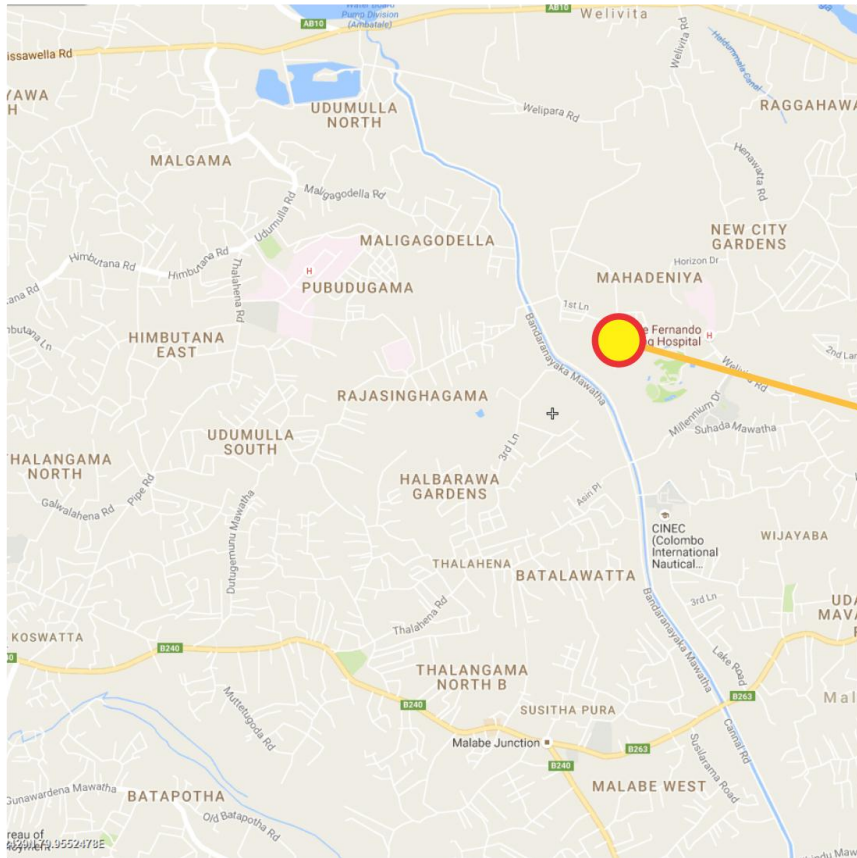


Location & Surrounding

- ❖ Located in a prime location in heart of the Colombo
- ❖ Temple Trees, Gangarama Temple, Bishops college, in an around the area.

Land Extend:- 01R 20p

Malabe IT Park land

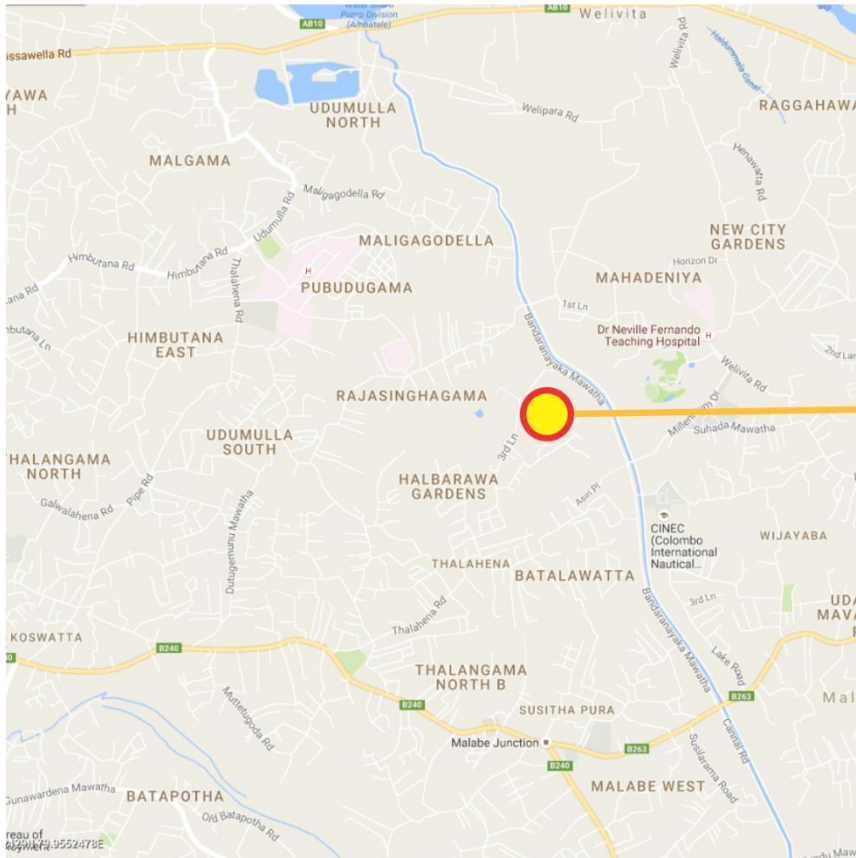


Three Lands plots are offered

Site - 01

- ❖ 2A 2R 0p
- ❖ Land Value: Rs.450,000 per perch

Malabe IT Park land



Three Lands plots are offered

Site - 02

❖ 1A OR 64p

Site - 03

❖ 1A 2R 7.65p

❖ Land Value: Rs.450,000 per perch

Housing Development Program - Hambantota



Location & Surrounding

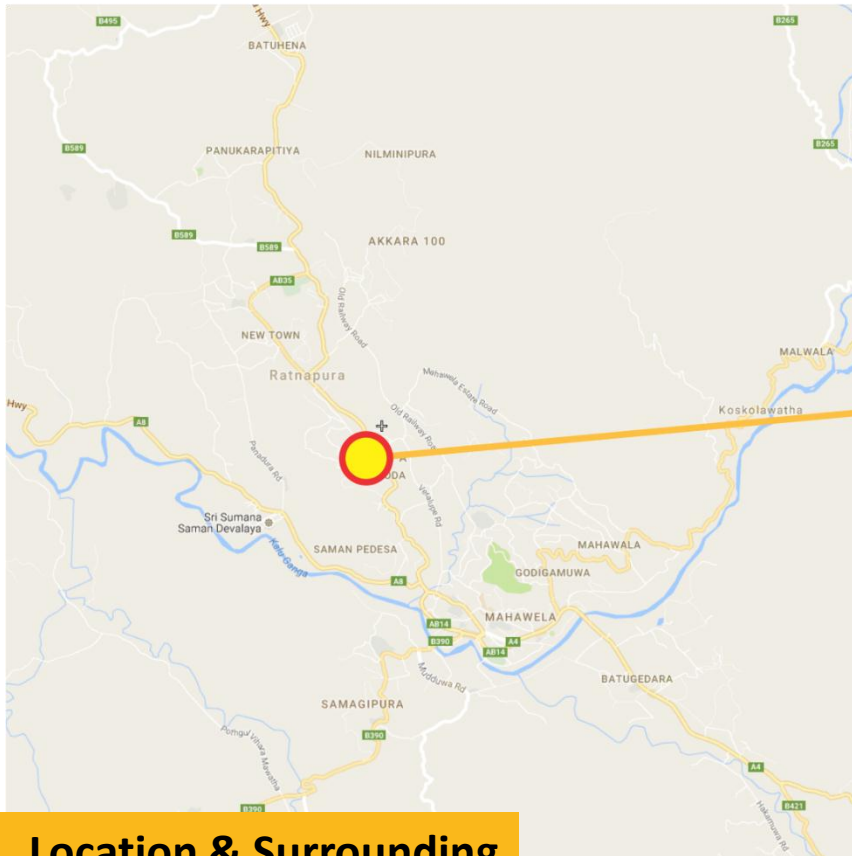
Site - 01

- ❖ Type of Project: Land Invest for Middle Income Housing
- ❖ Site Extent: 220A
- ❖ Total Investment: Rs. 18,000.00Mn
- ❖ Land Ownership: UDA
- ❖ Intervention Expected from Private Sector: By constructing and selling by Housing Units
- ❖ Financial: UDA Land private investments

Site - 02

- ❖ Type of Project: Land Invest for High Income Housing
- ❖ Site Extent: 32 A
- ❖ Total Investment: Rs. 9,000.00Mn

Rathnapura Land



Location & Surrounding

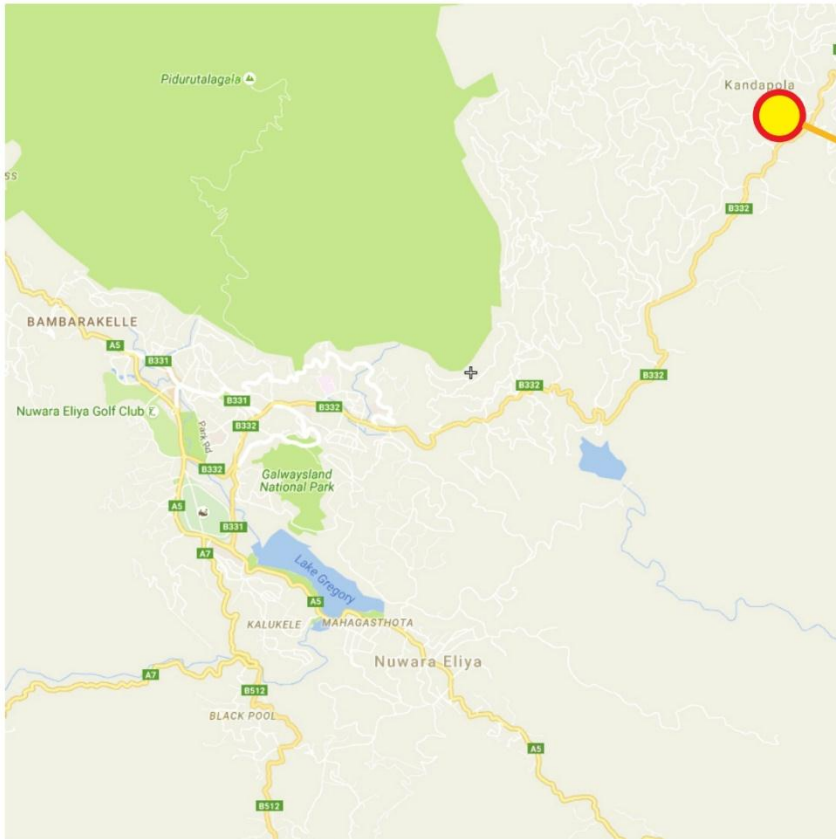
- ❖ Situated in North-West part of the RMC.
- ❖ Direct Access to Colombo - Ratnapura Main Road from Weralupa Junction.
- ❖ Ideal location is Very famous for Mix Development activities.
- ❖ High Land area and scenic beauty place of the City.

Objective

- ❖ Better housing for middle income group

Land Extend:- 15A 1R 2.3p

Kandapola Land - Nuwara Eliya



Location & Surrounding

- ❖ Surrounding by rich aggro based area.
- ❖ Land is located center of the Kandapola town facing - Kadapola Ragala main road.

Land Extend:- 6.5A

Thank You

